

# Pro-Science Journals manuscript Template

## Author Guidelines

First Author <sup>1</sup> Affiliations including country name Email-id:	Second Author <sup>2</sup> Affiliations including country name Email-id:	Third Author <sup>3</sup> Affiliations including country name Email-id:
---	--	---

Author's name, address together with country name with the email id need to be placed in a table format with borders set to no line. The address should be centered within the cell. If initial author is completely different from corresponding author, then corresponding author's email need to be placed below the author names table as given below.

If there are more than three authors of an article, list the authors' name with address as given below:

First Author <sup>1</sup> Affiliations including country name Email-id:
Second Author <sup>2</sup> Affiliations including country name Email-id:
Third Author <sup>3</sup> Affiliations including country name Email-id:
Fourth Author <sup>4</sup> Affiliations including country name Email-id:

### ABSTRACT

This document provides format directions to be followed by authors for making ready manuscripts for publication in Pro Science Journals . Abstract need to exhibit general significance and advance of the work clearly accessible to a broad audience. Abstract will have a maximum of 150 words. The text of the abstract section needs to be in 12 point traditional Times New Roman. References mustn't be cited within the abstract.

Keywords- Provide a minimum of five to six keywords or phrases separated by commas. Keywords are an area of the meta knowledge of the article. Careful selection of words results in higher visibility and demarcation.

### 1. INTRODUCTION

This document could be a guide for pro-science journal authors. An electronic copy can also be downloaded from the ProScience journal's website.

For questions on paper guidelines, please contact [info@proscience.com](mailto:info@proscience.com)

Manuscript to be in MS-Word.

#### 1.1 Page Layout

**Use this document as a template and simply type your text into it.**

Your paper should use A4 size (i.e) 210mm (8.27") wide and 297mm (11.69") long. The page margins need to be set as moderate or set as follows:

- Top = (1.0")
- Bottom = (1.0")
- Left = Right = (0.75")

Title of the article and author affiliations need to be included in single column format. A 6 point spacing should be left after author affiliations. Starting from Abstract, a single column format needs to be adopted in the article throughout the manuscript

#### 1.2 Paragraph

After each section heading 6pt space should be left. After each section one line space should be left. After each paragraph 6 points spacing should be given. All paragraphs should be indented. Use double spacing and wide (3 cm) margins on white paper. (Avoid full justification, i.e., do not use a constant right-hand

margin.) Ensure that each new paragraph is clearly indicated

### 1.3 Body Text

The body text in the whole document should be in Times New Roman with font size 12.. Recommended font sizes are shown in Table 1. Use double spacing and wide (3 cm) margins on white paper. (Avoid full justification, i.e., do not use a constant right-hand margin.) Present tables and figure legends on separate pages at the end of the manuscript.

**Page length:** Maximum page length should be 15, 35 and 40 pages for Short Communication, Original article/case study and review paper, including text, references, tables and figures. **Each figure and table must be put separately on a single page.**

#### 1.3.1 Details of Title and Author

- **Title of the article**

Title of the article should be centred, with 22pt Times New Roman bold and placed at the top of the page. Except for special names, capitalize the first letter of the words in the title. 12pt space should to be given after the

title of the article. Short minor words in the title such as “a”, “an”, “and”, “at” “as”, “for” “by”, “if” “from”, “in”, “on”, “the” “or”, “of”, “to”, “into” “with” should not be capitalized.

- **Authors and their Affiliations**

The superscript numbers in author names to be numbered within the order of correspondence for the article. Author name within the article to be in 12 point regular

Times New Roman font. Author’s affiliation need be in 10 point regular Times New Roman font. The Email address should be in 10 point Times New Roman regular font. Mention precise and proper author names as these are indexed in official archives. Affiliations need be keyed in conjunction with a name along with superscript numbers and should have details of Laboratory/Institute/Department, Organization, City, State abbreviation and Country (without elaborating address).

In author names, the family name must be written as the last part of each author name (for example, John.S Rhonda).

Email address is mandatory for the corresponding author.

Table 1 Font Sizes to be adopted during article preparation

Font Size	Font (All the fonts used are in Time New Roman )	
	Regular Times New Roman font	Bold Times New Roman font
22 pt.		Paper Tittle should be 22 point bold, centered, the first letter to be capitalized for each word except short words
12 pt.	The Author name should be in 12 point regular times new roman font –centered in the cell	Section heading uppercase bold
12 pt.		Level-1 heading capitalize the first letter of each word bold
10 pt.	Table and Figure captions	Level-2 heading capitalize the first letter of each word bold
10 pt.	Author affiliation Email address in a table	

sentence case, with Times New Roman font bold with size 10 points.

### 1.4 Section Headings and Sub Headings

Authors should not use more than 3 levels of section headings in the manuscript (for example, 2.1.2 Heading Title). Section heading is 12 point uppercase Times New Roman bold. Level-1 subheading should be 12point Times New Roman bold, capitalized first letter of each word except short words. Level-2 subheadings should be put in

### 1.5 Figures and Tables

Figures and tables must be centered each in a single page. Multiple figures can be expressed as one figure (for e.g. 1a, 1b, 1c etc...), while retaining the maximum limit of 6. Please make sure that artwork files are in an acceptable format (TIFF (or JPEG), EPS (or PDF), or MS Office files) and with the correct resolution. If, together with your

accepted article, you submit usable color figures then Pro-Science will ensure, at no additional charge, that these figures will appear in color on the Web .Color figures in the print version will incur extra charges. The publisher may contact with a separate invoice for the color figures.

Permission must be obtained for use of copyrighted material from other sources (including the web).

### 1.5.1 Figure Legends (Captions)

Figure legends (captions) should be 12 point normal times new roman with a single space and centered. Legends should be preceded by the appropriate label, for example "Figure 1" and "Figure 2". Figures must be numbered using numerals. Legends of a single line must be centered whereas multi-line captions must be justified. Captions with figure numbers must be placed after (below) their associated figures, as shown in Figure 1.



Figure 1 Example of a High definition image

- **Charts/Graphs**

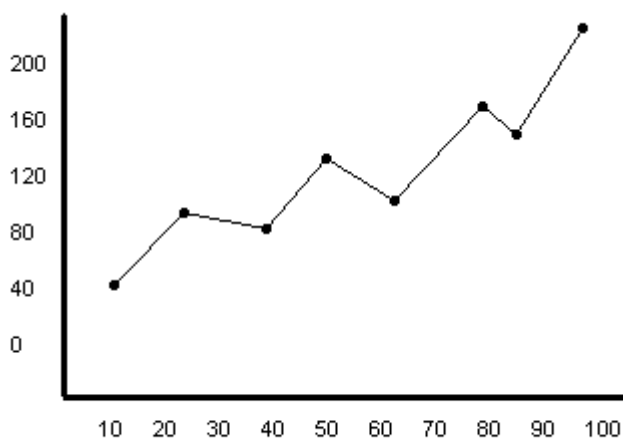


Figure 1 Population growth trends

- **Block diagram**

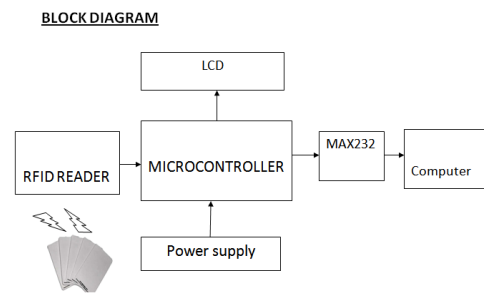


Figure 2 Automated attendance system

### 1.5.2 Table Legends (Captions)

Table legends should be in 12 point normal Times New Roman, single spaced and centered. Legends should be with a suitable label, for instance "Table 1". Table legends must be placed immediately before the table. Tables must be numbered using numerals. Legends with a single line to be centered while multiplying legend should be justified. Legends with Table numbers must be placed before their associated Tables, as shown in Table 1. The table content must be in 10pt Times New Roman regular font. Column headings and row headings must be in 10pt Times New Roman Bold capitalized each word.

Table 1 Example of table Effects of CO<sub>2</sub> Concentration on N.limenitica growth and lipid productivity

<b>CO<sub>2</sub> Concentration</b>	<b>Growth rate</b>	<b>Lipid productivity</b>
<b>3 (%)</b>	0.43 ± 0.01	0.33 ± 0.03
<b>10 (%)</b>	1.34 ± 0.21	0.56 ± 0.14

### 1.5.3 Abbreviations and Mathematical Equations and Units

Abbreviations should be defined when first used in the text.

Equations should be prepared with the standard equation editor tool. Equations should left as an image output of the equation editor in the text.

$$px = \frac{\Delta x}{\Delta t} \quad (1)$$

$$NA_{(aq)} = NA_{(gas)} \cdot H \quad (2)$$

$$NA_{(gas)} = \frac{F_g \cdot P \cdot y_i}{R \cdot V \cdot T} \quad (3)$$

Variables are to be presented in italics .The equation numbering should be done in continuous numerals, starting from 1. The numbers should be continuous throughout the manuscript irrespective of the sections. The equation numbers must be enclosed in round brackets placed to one end corresponding to the equation.

Standard International Units (SI) should be followed in all manuscripts; Use meter, kilogram, second, ampere, kelvin, mole, and candela as the basic units of length, mass, time, electric current, temperature, amount of substance, and luminous intensity.

#### 1.5.4 Page Numbers, Line numbers ,Headers and Footers

Provide Page numbers on right bottom corner of each page. Ensure that the entire text starting the first line of introduction to the end of the manuscript is given line number. Headers and footers must not be used.

#### 1.5.5 Links and Bookmarks

In case you need to refer to an Internet email address or URL in your paper, type out the address or URL fully in Regular font. For instance, <http://en.wikipedia.org/wiki>

## 2. CONCLUSIONS

The main conclusions drawn from the results should be presented in a short Conclusions section (**maximum 100 words**).

### Human Subject and Animal Research

The heading of the Human subject and Animal research section should not be numbered. Experiments with live vertebrates or higher invertebrates must be according to institutional and national guidelines and regulations. Authors should include the committee approving the experiments and must confirm that all experiments obey the relevant regulatory standards. For manuscripts reporting experiments on human subjects, authors must identify the committee approving the experiments and must also include a statement confirming that informed consent was obtained from all subjects. In Original Research Articles and Clinical Trial Articles these statements should appear in the Materials and Methods section.

## ACKNOWLEDGEMENT

The heading of the Acknowledgment section should not be numbered. Acknowledge the contributing institutions, colleagues and agencies that aided the efforts of the authors. A statement about source of funding can be included along with the grant number.

## REFERENCES

Total references should not exceed a maximum of 20, 35 and 75 references for short communication, original research paper and review papers, respectively. The heading of the REFERENCES should be 12 pt Times New Roman bold and not be numbered. All citations in the text, figures or tables must be in the reference list and vice-versa. List: References should be arranged first alphabetically, THEN NUMBERED NUMERICALLY, and then further sorted chronologically if necessary. More than one reference from the same author(s) in the same year must be identified by the letters 'a', 'b', 'c', etc., placed

after the year of publication. Examples: 'as demonstrated (Ronda, 2000a, 2000b, 1999; John and Chang, 1999). Kramer et al. (2010) have recently shown...'

Please provide the **doi** at the end of each reference, if applicable.

The references should only include articles that are published or accepted. For accepted, but unpublished works, use in the press instead of page numbers. Unpublished data, submitted manuscripts, or personal communications should be cited within the text only. All reference items must be in 10 pt font. Please use Regular and Italic styles to distinguish different fields as shown in the References section. Number the reference items consecutively, in square brackets (e.g. [1]).

When referring to a reference item, please simply use the reference number, as in [2]. Do not use "Ref. [3]" or "Reference [3]" except at the beginning of a sentence, e.g. "Reference [3] shows ...". Multiple references are each numbered with separate brackets (e.g. [2], [3], [4]–[6]).

Citations should be called according to the surname of the first author, followed by the year. For works by 2 authors include both surnames, followed by the year. For works by more than 2 authors include only the surname of the first author, followed by *et al.*, followed by the year.

- [1] Cohen, S. R., and John, N. R., 2000, A Novel sequential separation process for high value compounds, *Biores Technol*, 43,(1), pp 112-120.
- [2] Chan, E., et al., 2003, The art of writing a scientific article. *J. Sci. Commun.* 163 (3), 51–59,

#### Book Reference

- [3] Bailey, J.E., Ollis, D.F., 1986. *Biochemical Engineering Fundamentals*, Second ed. McGraw-Hill

#### Thesis/Dissertation Reference

- [4] First name or initials, Surname; Title of article (capitalize only the first word of the title and subtitle, in quotation marks with comma at end of title before quotation marks), "Ph.D. dissertation," or "M.S. thesis", University, Place (City), Year of Publication.

#### Website Reference

- [7]. First name or initials, Surname. (eds) [if appropriate] "Title of page", (Title of site), [online] date, url (Accessed: Access date).
- [8]. Title of page, *Title of site*, [online] date, URL (Accessed: Access date).